

Recently acquired (and forthcoming) bathymetry data within the Italian Program for Antarctic Research (PNRA)

Michele Rebesco, Daniela Accettella, Laura De Santis,
**National Institute of Oceanography and Applied Geophysics – OGS
Trieste, Italy**



Laura Crispini,
**Department of Earth, Environment and Life Sciences – DISTAV –
Genoa University – Genoa, Italy**



Leonardo Langone, Tommaso Tesi,
**National Research Council - Institute of Polar Sciences
(CNR-ISP), Bologna, Italy**

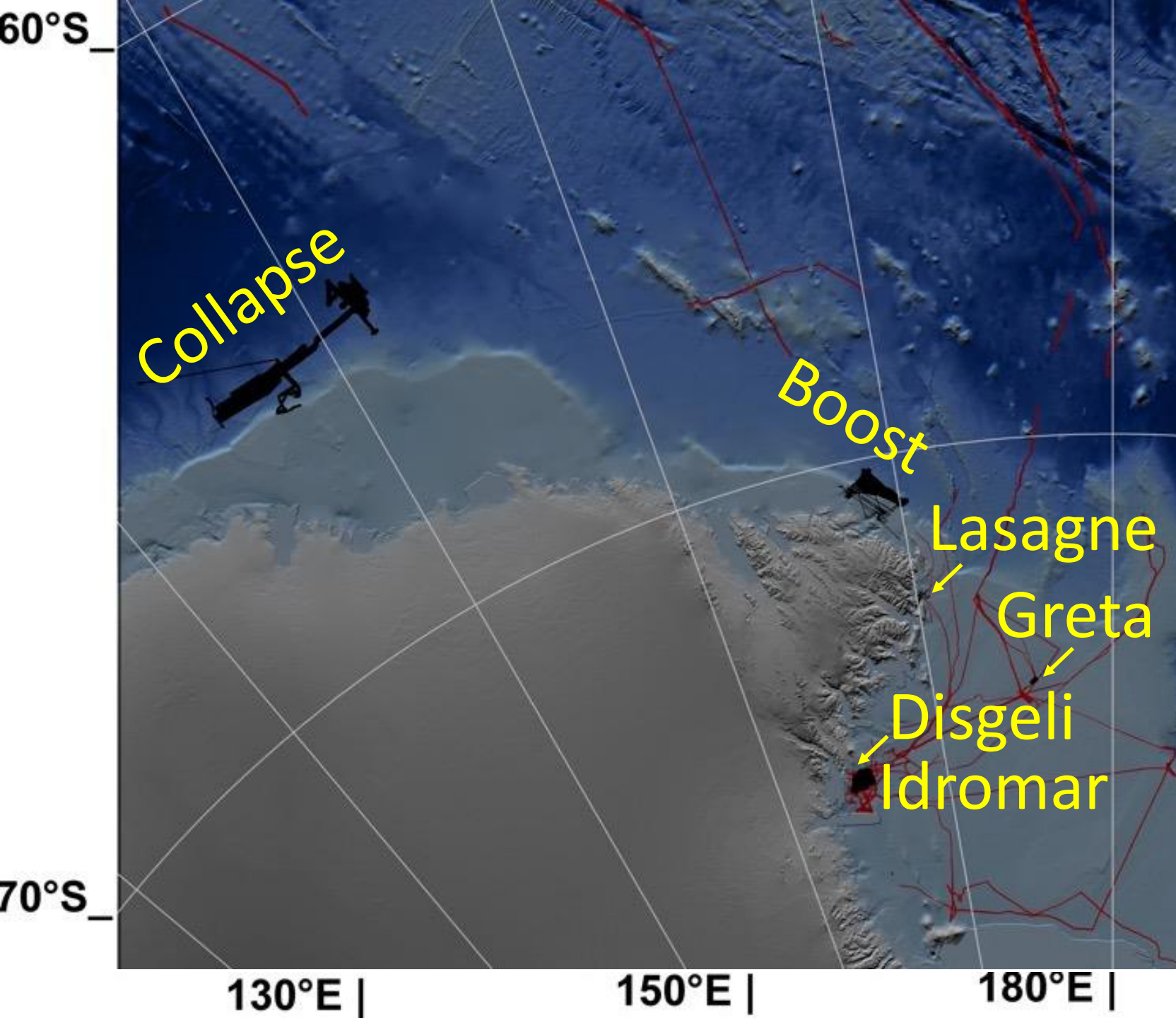


Luca Gasperini, Giuseppe Stanghellini,
**National Research Council - Institute of Marine Sciences
(CNR-ISMAR), Bologna, Italy**



Nunziante Langellotto
**Hydrographic Institute - Italian Navy
Genoa, Italy**





Recently acquired bathymetry data within the Italian Program for Antarctic Research (PNRA).

Most bathymetric swaths were acquired on board Laura Bassi, with hull mounted EM 304 Kongsberg multibeam echosounder.

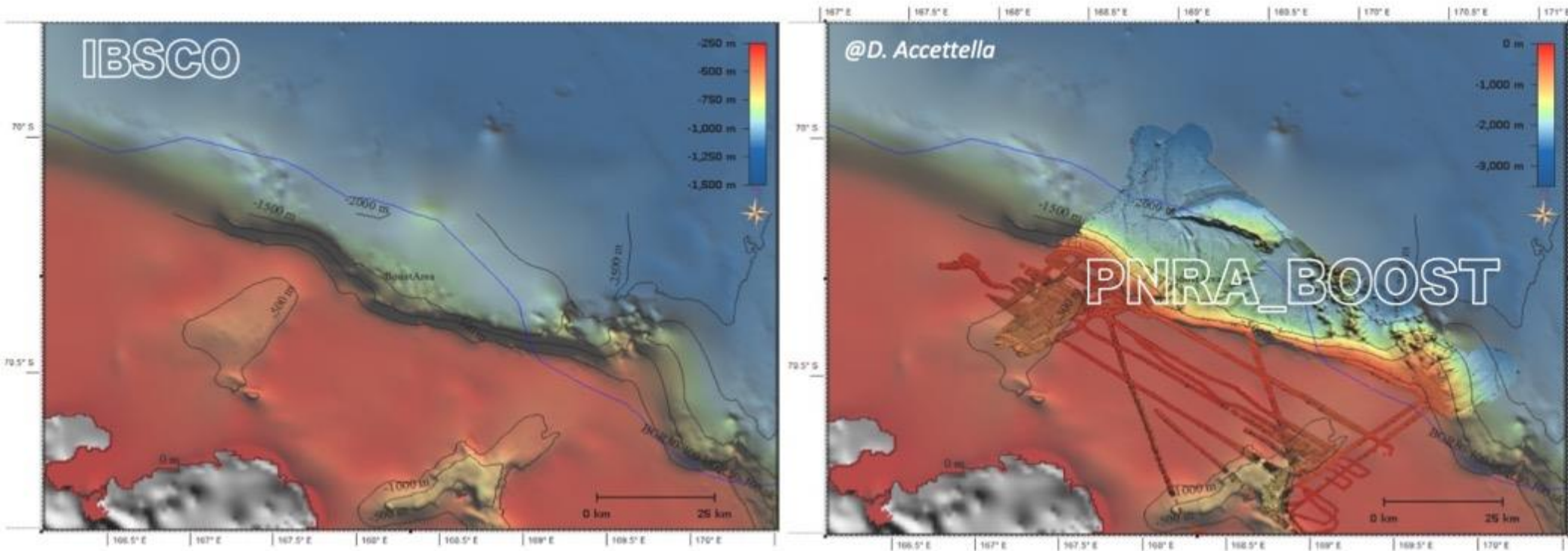


PNRA project BOOST (Bridging Onshore-Offshore STructures at the Pacific Coast of North Victoria Land (Antarctica): an integrated approach)

P.I. Laura Crispini (University of Genova), laura.crispini@unige.it

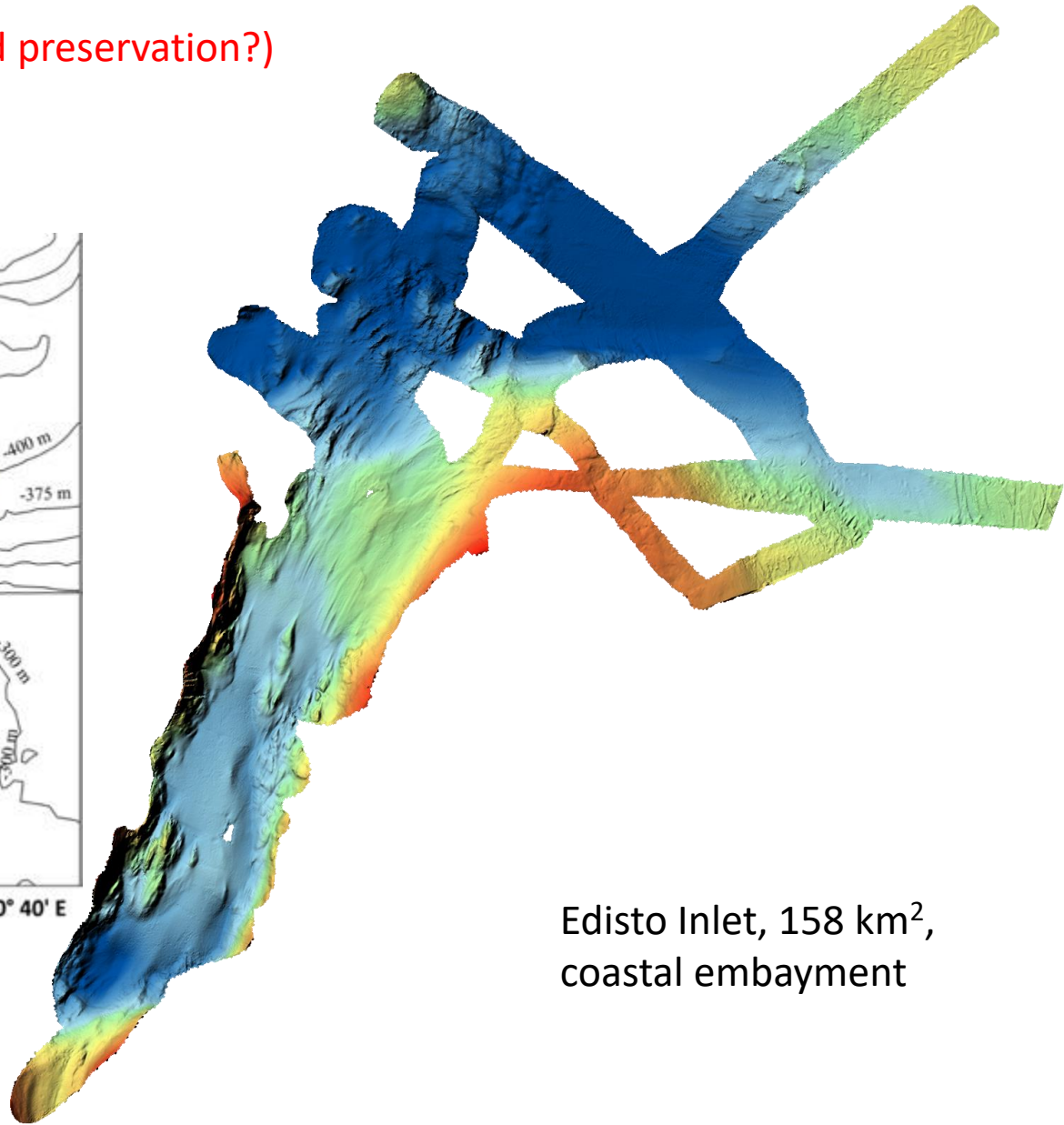
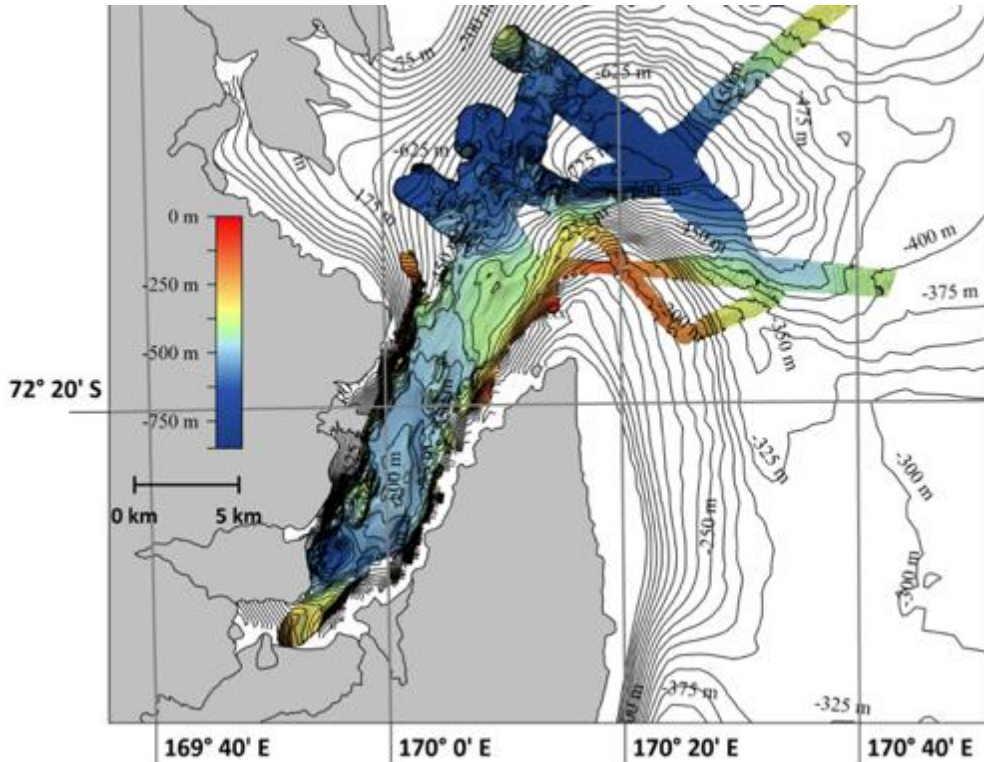
offshore North Victoria Land (Pennell Coast),
ca. 3,500 km² crossing the continental shelf and the ice grounding-zone

IBCSO vs BOOST

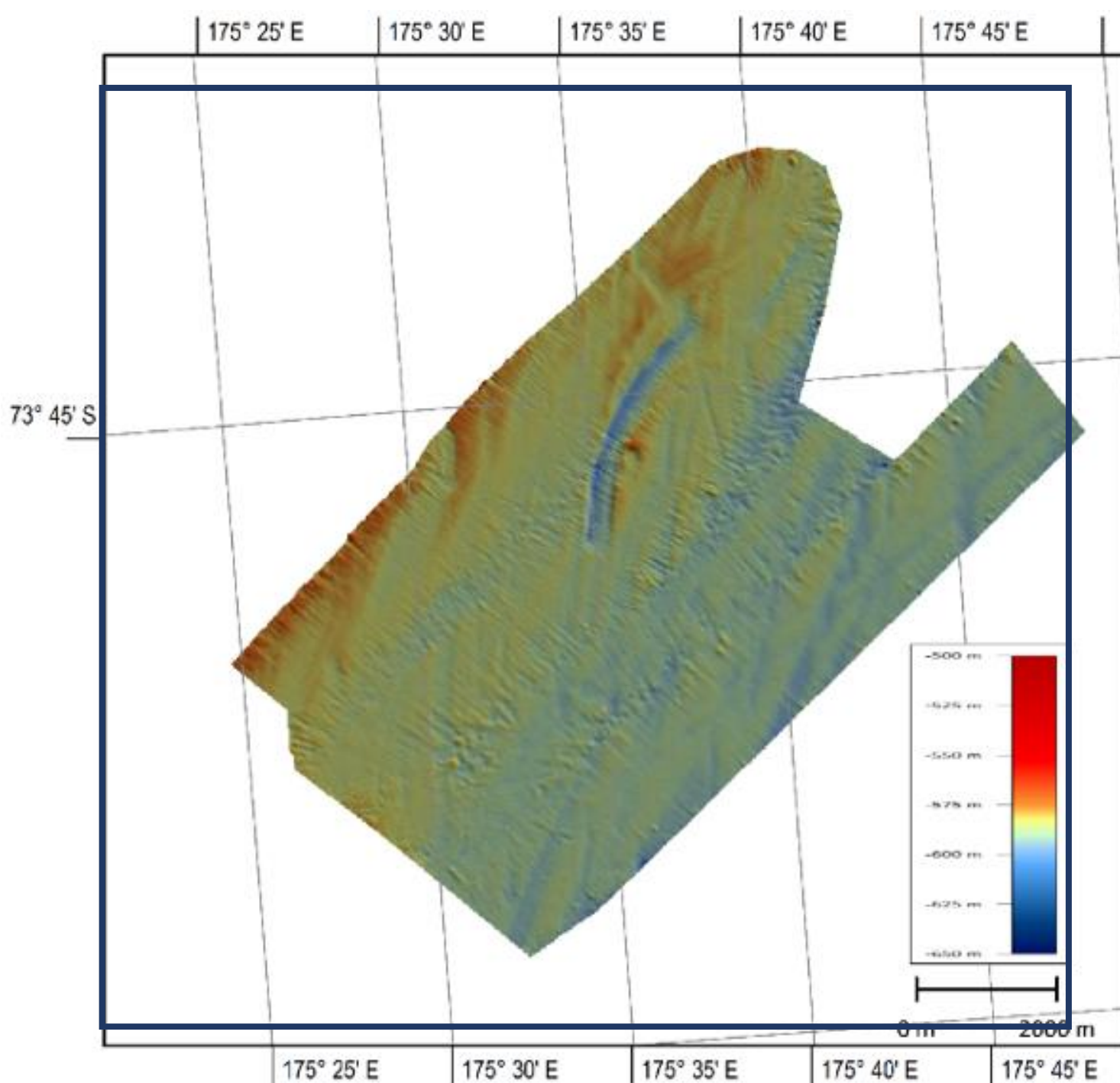


PNRA project LASAGNE (Laminated sediments in the magnificent Edisto Inlet (Victoria Land):
What processes control their deposition and preservation?)

P.I. Leonardo Langone (CNR),
leonardo.langone@cnr.it



Edisto Inlet, 158 km²,
coastal embayment



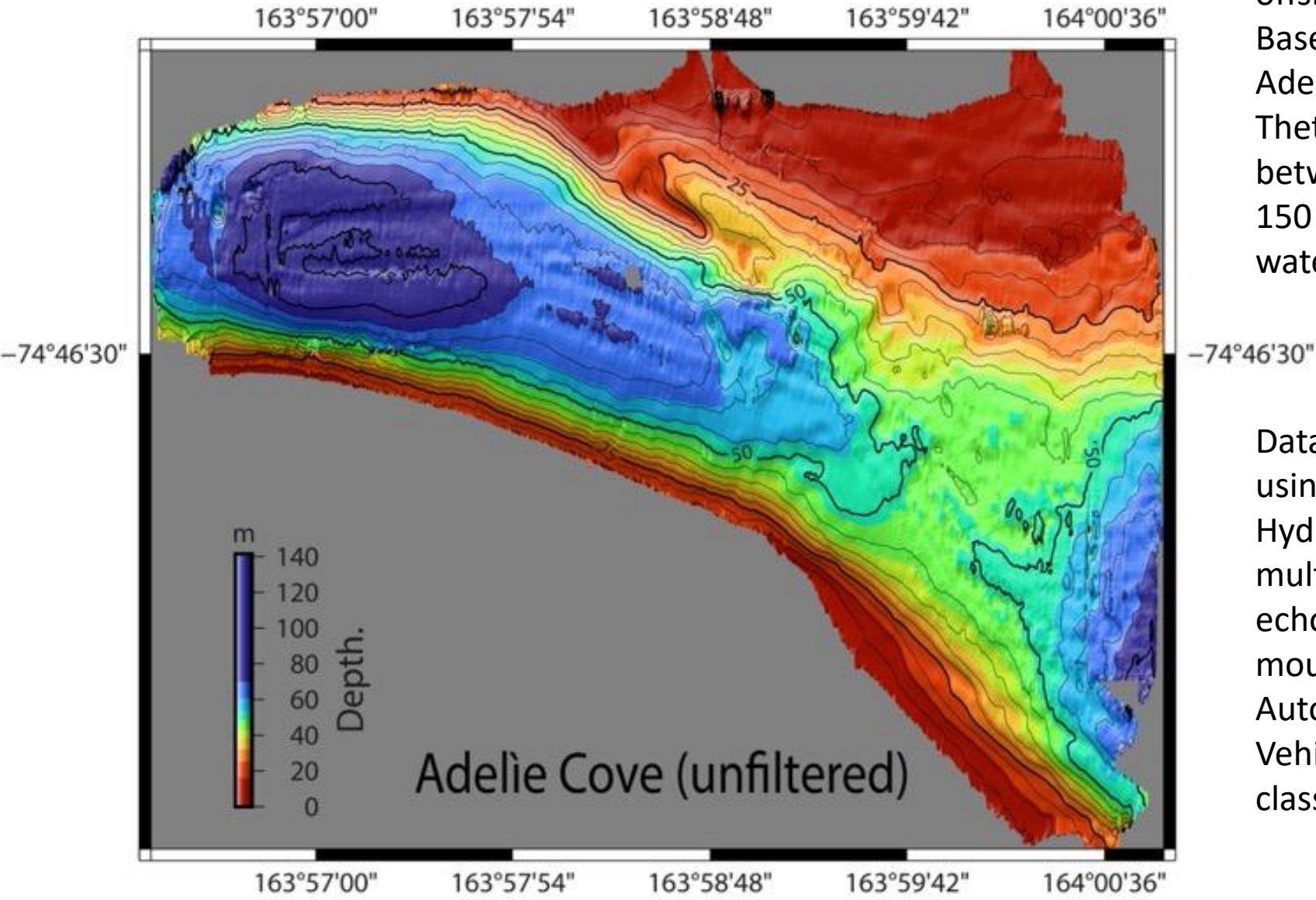
PNRA project GRETA
(CoolinG over thE
VicToria LAnd:
resolving the Ross Sea
response to continental
climate change during
the last two millennia)
P.I. Tommaso Tesi
(CNR),
tommaso.tesi@cnr.it

Joides Basin,
80 km²,
shelf basin

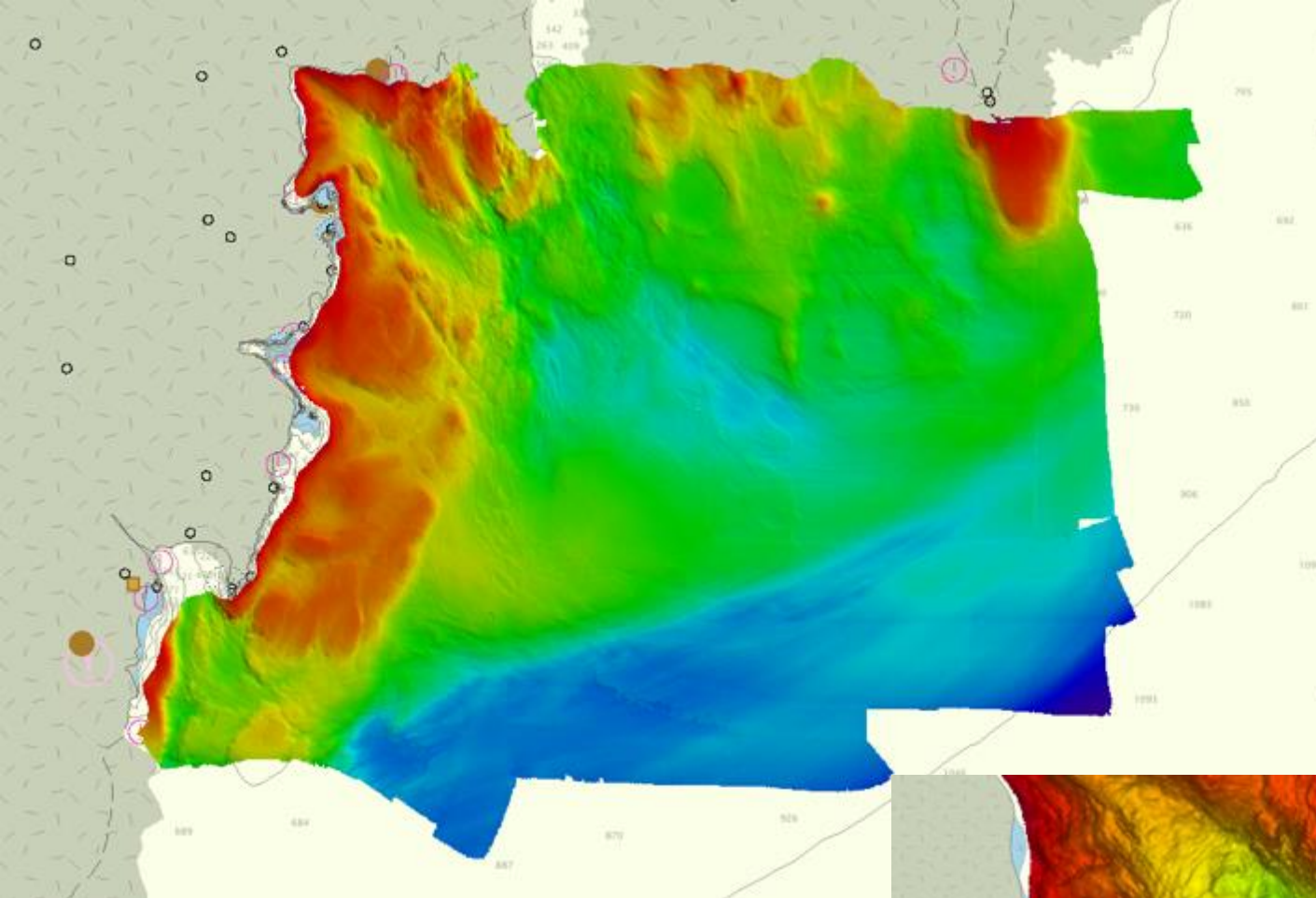
PNRA project DISGELI (Drone-based acquisition and modelling of morpho-stratigraphic data along the Terra Nova Bay (Victoria Land, Antarctica) coastline)

P.I. Luca Gasperini (CNR), luca.gasperini@bo.ismar.cnr.it

offshore Italian Base MZS, Adelie Cove and Thetis Bay; between 1 and 150 meters of water depth.



Data collected in using a Klein Hydrochart 3500 multibeam echosounder mounted on an Autonomous Surface Vehicle of the SWAP class.



PNRA project IDROMAR

P.I Nunziante Langellotto

(Italian Navy

Hydrographic Office),

[nunziante.langellotto@](mailto:nunziante.langellotto@marina.difesa.it)

[marina.difesa.it](mailto:nunziante.langellotto@marina.difesa.it)

Terra Nova Bay,

>2,000 km² in 2 years

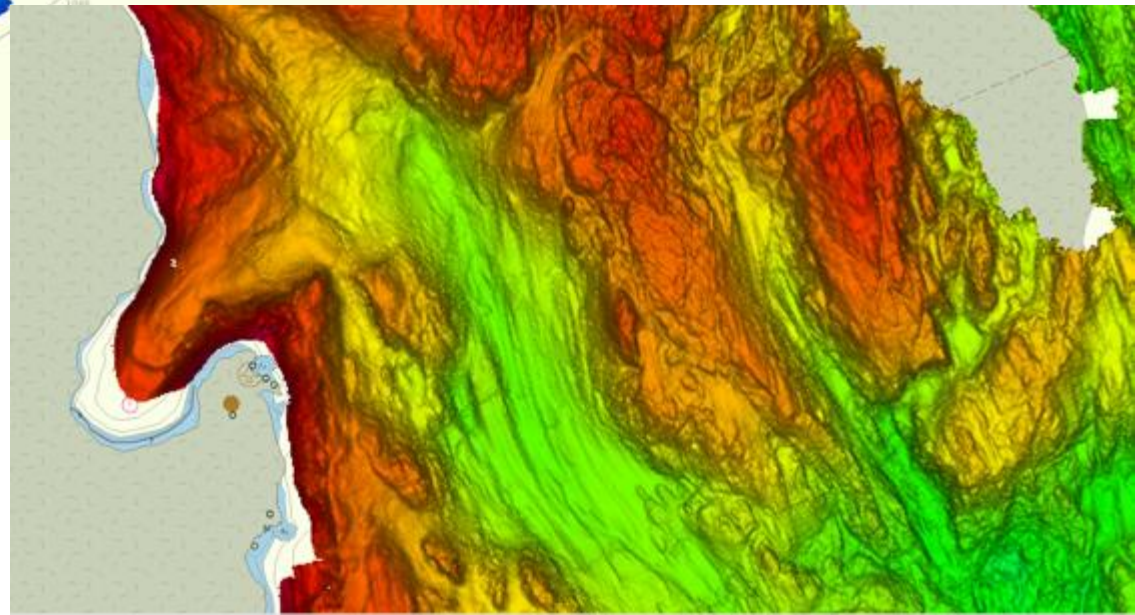
Singlebeam data collected last

year in the area of competence

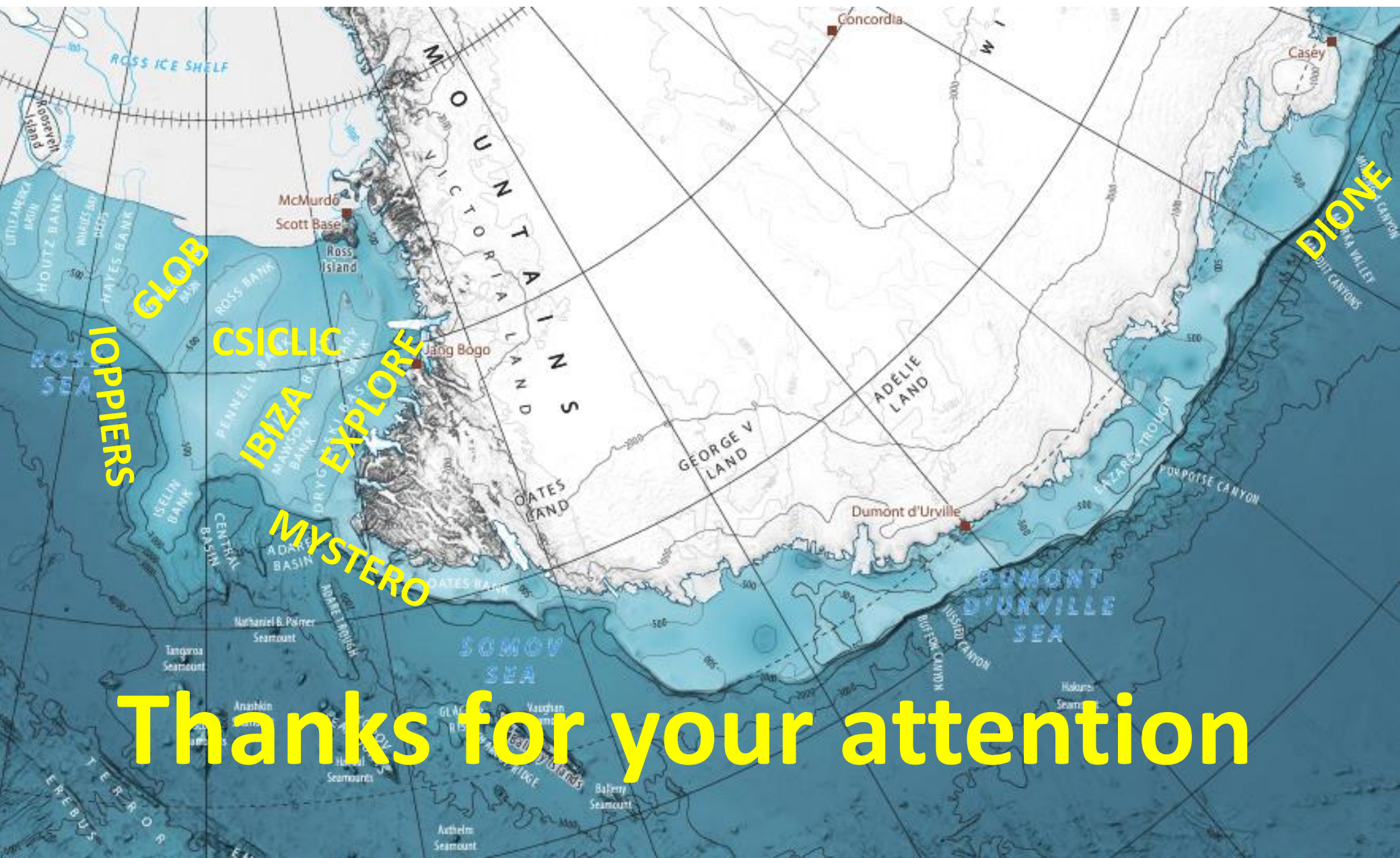
(while in the last year with

Multibeam systems).

In accordance with the International Hydrographic Organization – Hydrographic Commission for Antarctica, the Italian Hydrographic Office is in charge to produce the nautical chart of a specified area of the Ross Sea, in collaboration with other Hydrographic Office and the Scientific Entities.



Seven projects on board Laura Bassi (in 24-25 and/or 25/26) are just being approved by PNRA (beside the sustained “MORSEA” observatory and “IDROMAR” cartography)



Thanks for your attention